

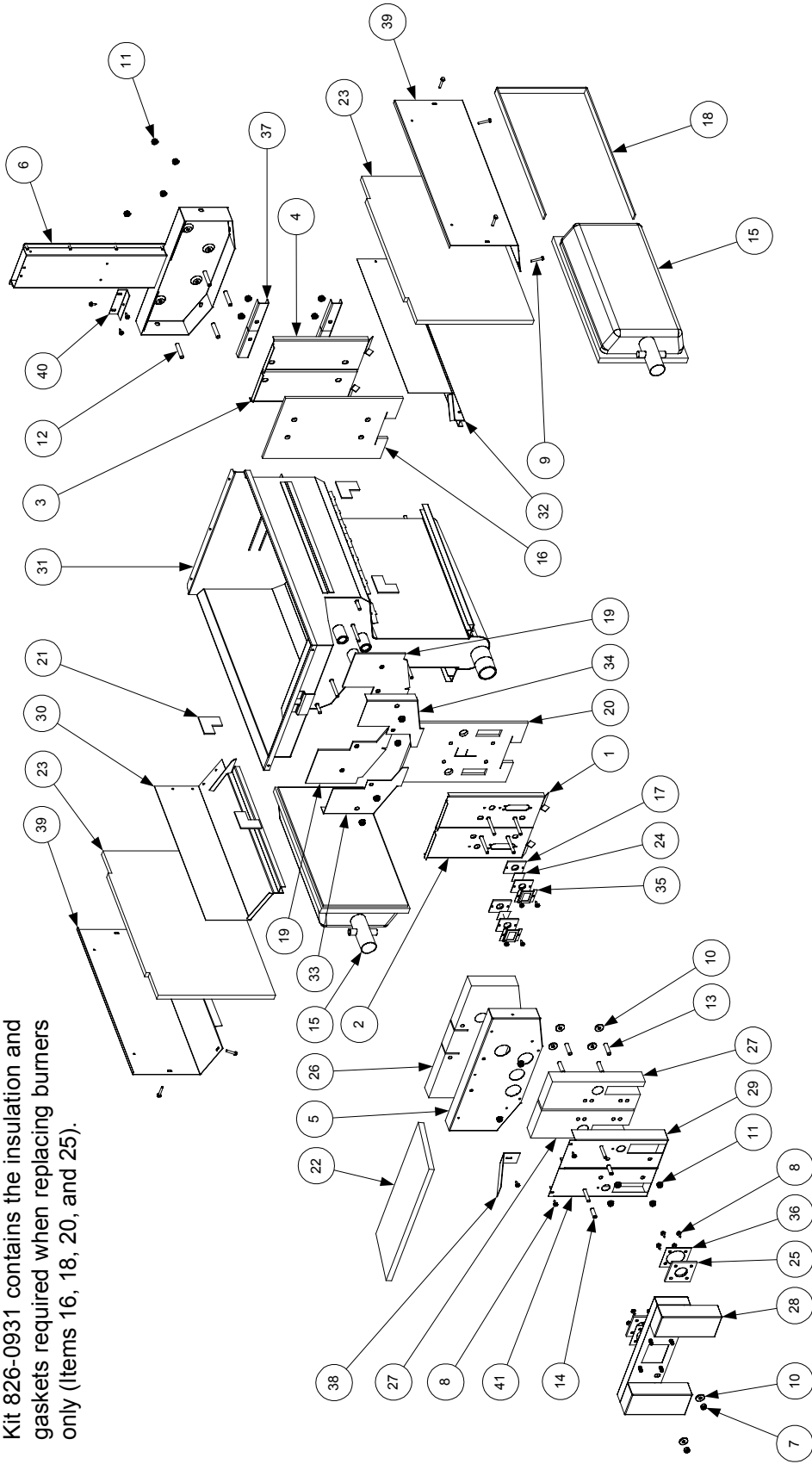
**FRYPOT AND
INSULATION BREAKDOWN
FOR
H50 AND H52
SERIES FRYERS**

**FOR USE WITH KITS
826-0929, 826-0930, 826-0931, AND 826-0932**

*** 8195194 *
FEBRUARY 2004**

Kit 826-0929 contains Items 7-14, 16-27, and 38 (all shown shaded in table).

Kit 826-0931 contains the insulating and gaskets required when replacing burners only (Items 16, 18, 20, and 25).



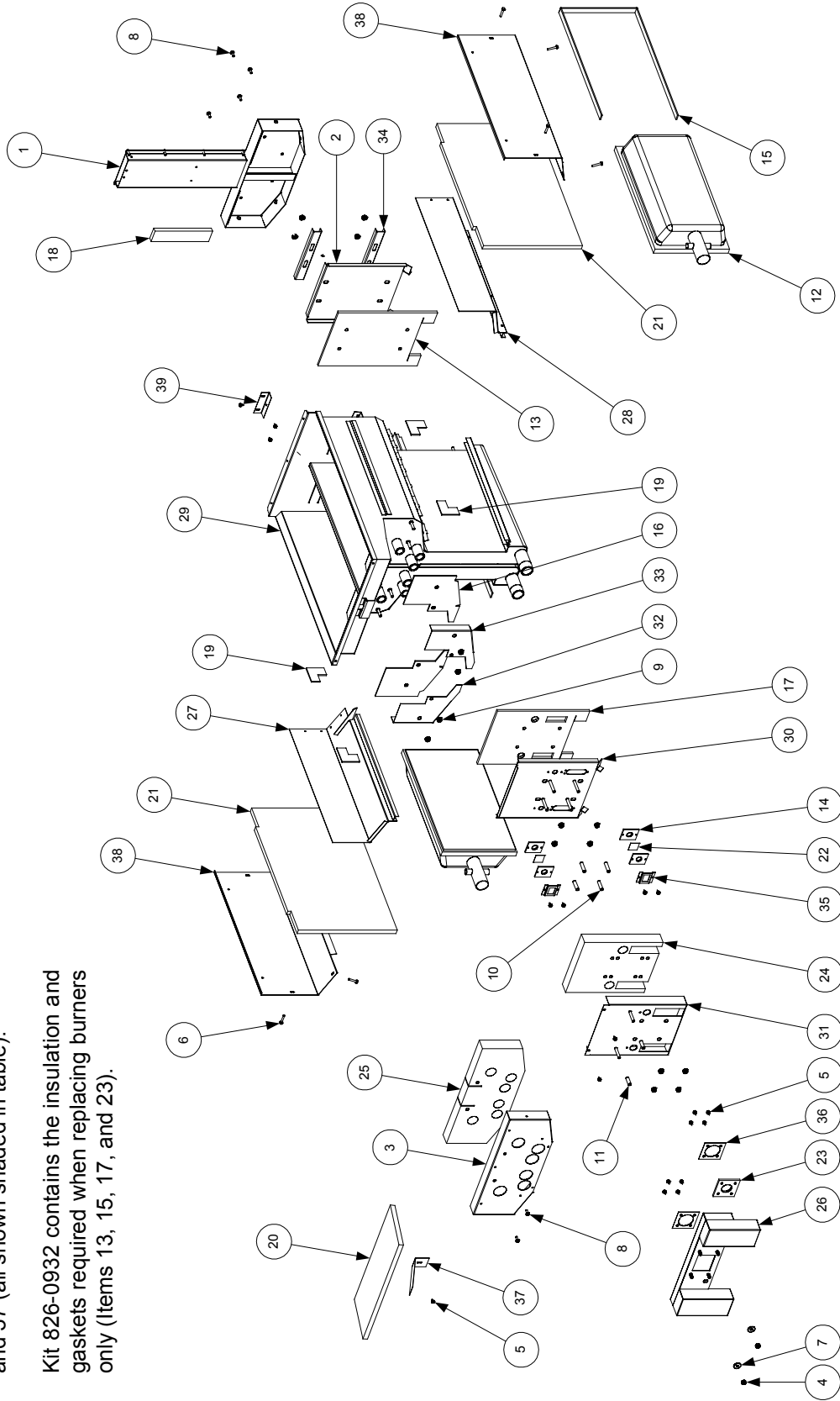
Full Vat Frypot Assembly (Typical)

ITEM	PART #	COMPONENT
1	823-3316	Retainer, Lower Front Insulation, Right
2	823-3315	Retainer, Lower Front Insulation, Left
3	200-0936	Back, Combustion Chamber, Left
4	200-0937	Back, Combustion Chamber, Right
5	200-2227	Retainer, Upper Front Insulation
6	106-1019SP	Flue Assembly, Full Vat
7	809-0059	Nut, 1/4-20 Hex Head Grip
8	809-0361	Screw, #8 x 1/2-inch Hex Head Drill Point
9	809-0362	Screw, # 8 x 1 1/4-inch Hex Head Drill Point
10	809-0435	Washer, 3/4-inch OD x 1/4-inch ID Steel
11	809-0417	Nut, 1/4-20 Serrated Flange
12	810-0406	Spacer, 1/4-inch x 1 7/16-inch Long
13	810-0476	Spacer, 1/4-inch x 1 3/16-inch Long
14	810-0500	Spacer, 1/4-inch x 1 5/16-inch Long
15	826-1072	Burner, Natural or Propane, Universal (826-1073 for Mfg gas)
16	812-0355	Insulation, Lower Rear
17	812-0356	Insulation, Sight Glass Gasket
18	816-0577	Insulation, Burner
19	812-0404	Insulation, Front Seal (for left and right)
20	812-0457	Insulation, Lower Front
21	812-0706	Insulation, Upper Burner Rail
22	812-0993	Insulation, Upper Oil Zone
23	812-1029	Insulation, Combustion Chamber Side
24	814-0048SP	Sight Glass
25	816-0057	Gasket, Plenum Chamber
*	816-0059	Gasket, Ignitor
26	816-0560	Insulation, Upper Front
27	816-0561	Insulation, Combustion Chamber, Outer
28	823-0969	Plenum, Full Vat (823-1048 for CE units)
29	823-3304	Combustion Chamber Outer Front, Right
30	823-1777SP	Burner Rail, Left
31	N/A	Frypot, Full Vat (shown for assembly reference only)
32	823-3142	Burner Rail, Right
33	824-0863	Retainer, Left Front Seal Insulation
34	824-0864	Retainer, Right Front Seal Insulation
35	900-1031	Retainer, Sight Glass, 3/4-inch
36	900-1049	Retainer, Plenum Chamber Gasket
37	900-1221	Retainer, Rear Insulation and Combustion Chamber Back
38	900-1515	Brace, Upper Oil Zone Insulation
39	900-4452	Retainer, Combustion Chamber Side Insulation
40	930-0818	Bracket, Flue to Frypot Connection
41	823-3305	Combustion Chamber Outer Front, Left

* Not illustrated.

Kit 826-0930 contains items 4-11, 13-25, and 37 (all shown shaded in table).

Kit 826-0932 contains the insulation and gaskets required when replacing burners only (Items 13, 15, 17, and 23).



Dual Vat Frypot Assembly (Typical)

ITEM	PART #	COMPONENT
1	106-1018SP	Flue Assembly, Dual Vat
2	200-0941	Back, Combustion Chamber
3	200-2229	Retainer, Upper Front Insulation
4	809-0059	Nut, 1/4-20 Hex Head Grip
5	809-0361	Screw, #8 x 1/2-inch Slotted Hex Washer Head
6	809-0362	Screw, # 8 x 1 1/4-inch Hex Head Drill Point
7	809-0345	Washer, 3/4-inch OD x 1/4-inch ID Steel
8	809-0500	Screw, #10 x 1/2-inch Hex Washer Head
9	809-0417	Nut, 1/4-20 Serrated Flange
10	810-0476	Spacer, 1/4-inch x 1 3/16-inch Long
11	810-0500	Spacer, 1/4-inch x 1 5/16-inch Long
12	826-1072	Burner, Natural or Propane, Universal (<i>826-1073 for Mfg gas</i>)
13	812-0354	Insulation, Lower Rear
14	812-0356	Insulation, Sight Glass Gasket
15	816-0577	Insulation, Burner
16	812-0404	Insulation, Front Seal (for left and right)
17	812-0458	Insulation, Lower Front
18	812-0688	Insulation, Flue Collector
19	812-0706	Insulation, Upper Burner Rail
20	812-0993	Insulation, Upper Oil Zone
21	812-1029	Insulation, Combustion Chamber Side
22	814-0048SP	Sight Glass
23	816-0057	Gasket, Plenum Chamber
*	816-0059	Gasket, Ignitor
24	816-0558	Insulation, Combustion Chamber, Outer
25	816-0559	Insulation, Upper Front
26	823-0970SP	Plenum, Dual Vat (<i>823-2181 for CE units</i>)
27	823-2822SP	Burner Rail, Left
28	823-2823SP	Burner Rail, Right
29	N/A	Frypot, Dual Vat (shown for assembly reference only)
30	823-3302	Retainer, Lower Front Insulation
31	823-3303	Combustion Chamber Outer Front
32	824-0865	Retainer, Left Front Seal Insulation
33	824-0866	Retainer, Right Front Seal Insulation
34	900-0914	Retainer, Rear Insulation and Combustion Chamber Back
35	900-1031	Retainer, Sight Glass, 3/4-inch
36	900-1049	Retainer, Plenum Chamber Gasket
37	900-1515	Brace, Upper Oil Zone Insulation
38	900-4452	Retainer, Combustion Chamber Side Insulation
39	930-0818	Bracket, Flue to Frypot Connection

* Not illustrated.